

# JAMES K. LYSTRUP, ARCHITECT

PHONE: (208) 406-3153  
jameslystrup@gmail.com

7875 Prospector Hollow Lane  
POCATELLO, IDAHO 83201

---

## ADDENDUM NO. TWO

**March 22, 2019**

---

Project: View 1, 2 Wards – Mechanical Upgrade  
R&I Building Remodel  
Oakley ID Stake  
503-8669

To: INVITED BIDDERS

---

This Addendum forms a part of the Contract Documents and modifies the original Bidding Documents dated March, 2019, as noted below. Acknowledge receipt of this Addendum in the space provided on the Bid Form. Failure to do so may subject the Bidder to disqualification.

This Addendum consists of (6) pages.

---

### I - CHANGES TO PRIOR ADDENDA:

Item I-1. NONE

### II - CHANGES TO BIDDING REQUIREMENTS:

Item II-1. NONE

### III - CHANGES TO AGREEMENT & OTHER CONTRACT FORMS:

Item III-1. NONE

### IV - CHANGES TO CONDITIONS OF THE CONTRACT:

Item IV-1. The contractor shall add 5,200.00 to it's base bid to cover permitting costs.

### V - CHANGES TO SPECIFICATIONS:

Item V-1. See the attached Section 23 3401. Exhaust Fans.

### VI – CHANGES TO THE DRAWINGS:

Item VI-1. Sheet MPE-2  
Sheet MPE-1 Shift location of new CU-8 and CU-9 to the East as per Sketch 1-1.  
Add to the base bid, replace existing CU-10 and CC-10 with new as per sketch 1-2 and 1-3.

**SECTION 23 3401****EXHAUST FANS****PART 1 - GENERAL****1.1 SUMMARY**

- A. Includes But Not Limited To:
  - 1. Furnish and install exhaust fans as described in Contract Documents.
- B. Related Requirements:
  - 1. Section 23 3001: 'Common Duct Requirements'.
  - 2. Division 26: Control device and electrical connection.

**1.2 QUALITY ASSURANCE**

- A. Regulatory Agency Sustainability Approvals:
  - 1. Bear AMCA seal and UL label.

**PART 2 - PRODUCTS****2.1 MANUFACTURERS**

- A. Manufacturer Contact List:
  - 1. Acme Engineering & Manufacturing Corp, Muskogee, OK [www.acmefan.com](http://www.acmefan.com).
  - 2. Broan-Nu Tone LLC, Harford, WI [www.broan.com](http://www.broan.com).
  - 3. Carnes Co., Verona, MI [www.carnes.com](http://www.carnes.com).
  - 4. Loren Cook Co., Springfield, MO [www.lorencook.com](http://www.lorencook.com).
  - 5. Soler & Palau (S&P USA Ventilation Systems, LLC), Jacksonville FL [www.solerpalau-usa.com](http://www.solerpalau-usa.com).

**2.2 MANUFACTURED UNITS**

- A. Ceiling Mounted Exhaust Fans:
  - 1. Acoustically insulated housings. Sound level rating of 5.0 sones maximum for CFM and static pressure listed on Contract Drawings.
  - 2. Include chatterproof integral back-draft damper with no metal-to-metal contact.
  - 3. True centrifugal wheels.
  - 4. Entire fan, motor, and wheel assembly shall be easily removable without disturbing housing.
  - 5. Suitably ground motors and mount on rubber-in shear vibration isolators.
  - 6. Provide wall or roof cap, as required.
  - 7. Category Four Approved Products. See Section 01 6200 for definitions of Categories:
    - a. Acme: VQ.
    - b. Broan: LoSone.
    - c. Carnes: VCD.
    - d. Cook: Gemini.

- e. Soler & Palau: FF.

### **PART 3 - EXECUTION**

#### **3.1 INSTALLATION**

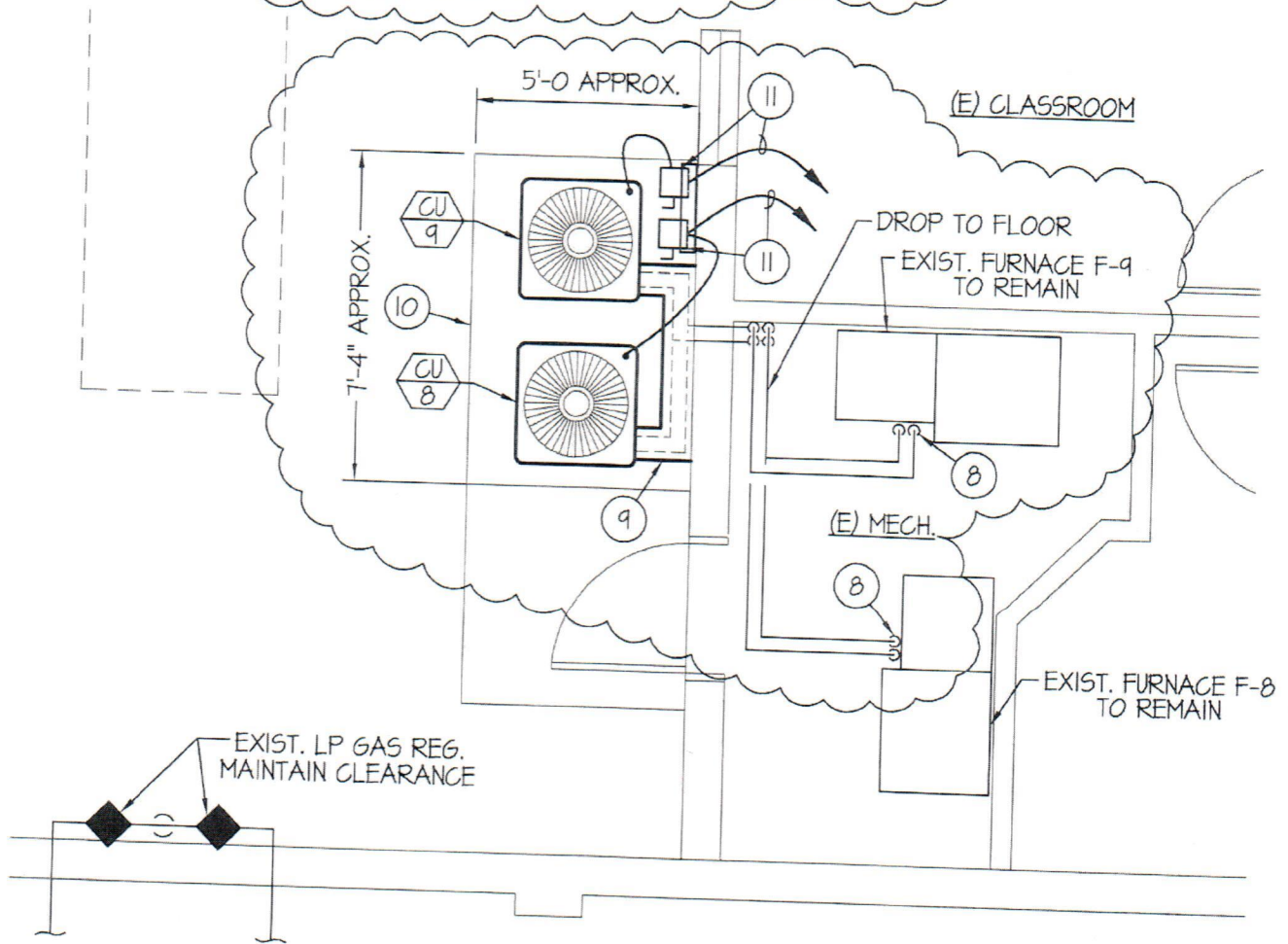
- A. Anchor fan units securely to structure or to curb.

**END OF SECTION**

# MECHANICAL REVISION 3-20-19

## PLAN NOTES:

- ⑧ INSTALL NEW REFRIGERANT PIPING FROM EXISTING COOLING COIL ON FURNACE AND RUN ACROSS CEILING TO CORNER OF MECH. ROOM. DROP PIPING DOWN EXPOSED ON WALL TO FLOOR AND THRU EXTERIOR WALL TO CONDENSING UNITS AS SHOWN. SEAL HOLES IN WALL WEATHERTIGHT.



## MECHANICAL / PLUMBING FLOOR PLAN

SCALE: 1/4" = 1'-0"

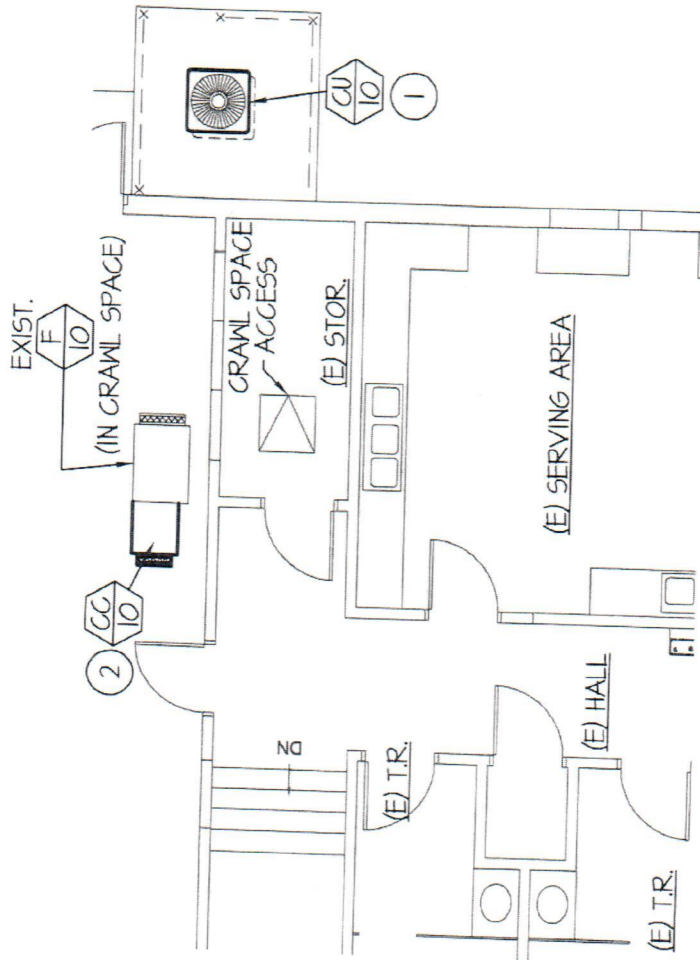


SKETCH ADD. #1-1

# MECHANICAL BID ALTERNATE #1 3-20-19

## PLAN NOTES:

- 1 REMOVE EXISTING CONDENSING UNIT, CAPTURE EXISTING R-22 REFRIGERANT, AND REPLACE WITH NEW R410A CONDENSING UNIT. RECONNECT TO EXISTING ELEC, CONTROLS AND REFR. PIPING. CONTRACTOR TO VERIFY EXISTING CONDITION OF REFRIGERANT PIPING. IF PIPING IS FOUND TO BE IN GOOD CONDITION WITH NO LEAKS, CONTRACTOR CAN RE-USE EXISTING PIPING INSTEAD OF INSTALLING NEW PIPING. IF EXISTING PIPING IS RE-USED, CONTRACTOR MUST CLEAN AND PURGE LINES USING RX-II CLEANING KIT BEFORE NEW R410A REFRIGERANT IS INSTALLED AND NEW CONDENSING UNITS AND COILS CONNECTED. EXISTING LINES MUST HOLD PRESSURE AND DEMONSTRATE INTEGRITY THROUGH-OUT SYSTEM.
- 2 REMOVE EXISTING DX COOLING COIL AND DISCONNECT EXISTING REFR. PIPING AND COND. DRAIN PIPING. INSTALL NEW R410A DX COOLING COIL ON EXISTING FURNACE F-10. RECONNECT TO EXISTING COND. DRAIN PIPING AND REFR. PIPING (SEE NOTE ABOVE).



## MECHANICAL / PLUMBING FLOOR PLAN

SCALE: 1/8" = 1'-0"

NORTH

SKETCH ADD. #1-2

# MECHANICAL BID ALTERNATE #1 3-20-19

## CONDENSING UNIT SCHEDULE

SYM.	BTU	EAT	CHAR.	MCA	MFS	SEER	REFR.	PIPE SIZING		REMARKS
								LIQUID	SUCTION	
CU 10	48,000	89°F	240/60/1	28.9	50.0	13.0	R-410A	1/2"	7/8"	(A) LENNOX MODEL 13AGX-048 WITH 0°F LOW AMBIENT HARD START KIT.

(A) SEE SPECIFICATIONS FOR OTHER APPROVED MANUFACTURERS.

## DX COOLING COIL SCHEDULE

SYM.	TYPE	C.F.M.	DX COOLING COIL				PIPING SIZES			REMARKS
			B.T.U.	E.A.T.	L.A.T.	MAX. P.D.	LIQUID	SUCTION	C.D.	
CC 10	HORIZ.	1600	48,000	75°F	55°F	.25"	SEE C. UNIT SCHED.	SEE C. UNIT SCHED.	3/4"	4 TON FULLY CASED R-410A DX COOLING COIL TO MATCH FURNACE.

SKETCH ADD. #1-3

END OF APPENDIX #2